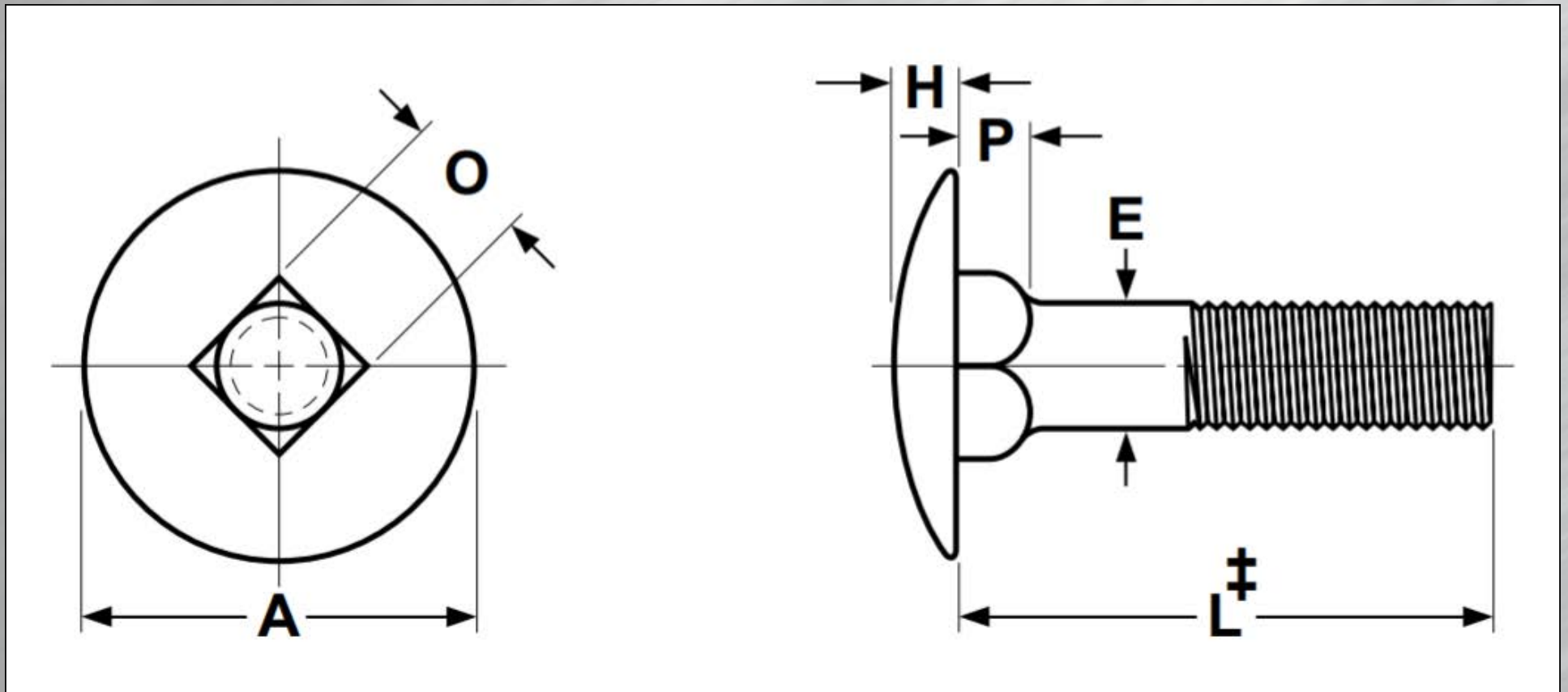


STEP BOLTS





545 Basket Road • Webster, NY 14580
 Toll Free • 800.691.0292 | Local • 585.265.1990 | Fax • 585.265.6678
 sales@fastenersdirect.com
 www.fastenersdirect.com

STEP BOLTS

Nominal Size	E		A		H		O		P	
	Body Diameter		Head Diameter		Head Height		Square Width		Square Depth	
	Max	Min	Max	Min	Max	Min	Max	Min	Max	Min
10	0.199	0.182	0.656	0.625	0.114	0.094	0.199	0.185	0.125	0.094
1/4	0.260	0.237	0.844	0.813	0.145	0.125	0.260	0.245	0.156	0.125
5/16	0.324	0.298	1.031	1.000	0.176	0.156	0.324	0.307	0.187	0.156
3/8	0.388	0.360	1.219	1.188	0.208	0.188	0.388	0.368	0.219	0.188

Tolerance on Length	Nominal Bolt Size	Nominal Bolt Length		
		Up to 1 in., Incl.	Over 1 in. to 2-1/2 in., incl.	Over 2-1/2 in. to 4 in., incl.
	No. 10 thru 3/8	+0.02, -0.03	+0.02, -0.04	+0.04, -0.06



545 Basket Road • Webster, NY 14580
Toll Free • 800.691.0292 | Local • 585.265.1990 | Fax • 585.265.6678
sales@fastenersdirect.com
www.fastenersdirect.com

STEP BOLTS

Description	Similar to a carriage bolt in bearing surface and square-neck design, but with a wider, lower-profile, round head.
Applications / Advantages	Preferred for use where wood is bolted down as decking - the larger diameter head of the step bolt will not pull through the soft wood. Smooth, low rounded head permits unrestricted movement over the surface.
Material	AISI 1006 - 1050 or equivalent steel
Hardness	<i>No. 10 through 3/8 in. diameter, all lengths:</i> Rockwell B70 - B100
Proof Load	<i>No. 10 through 3/8 in. diameter, all lengths:</i> 33,000 psi
Yield Strength	<i>No. 10 through 3/8 in. diameter, all lengths:</i> 36,000 psi minimum
Tensile Strength	<i>No. 10 through 3/8 in. diameter, all lengths:</i> 54,000 psi, minimum
Elongation	18% minimum (all sizes)
Reduction of Area	35% minimum (all sizes)
Minimum Thread Length	The minimum length of thread shall be equal to twice the basic bolt diameter plus 0.25 in.